



# 2024 Teletthon Home



VIEW  
ONLINE



VIRTUAL  
WALKTHROUGH

9440 1800

[blueprinthomes.com.au](http://blueprinthomes.com.au)

It's better building  
with Blueprint



# 2024 Telethon Home

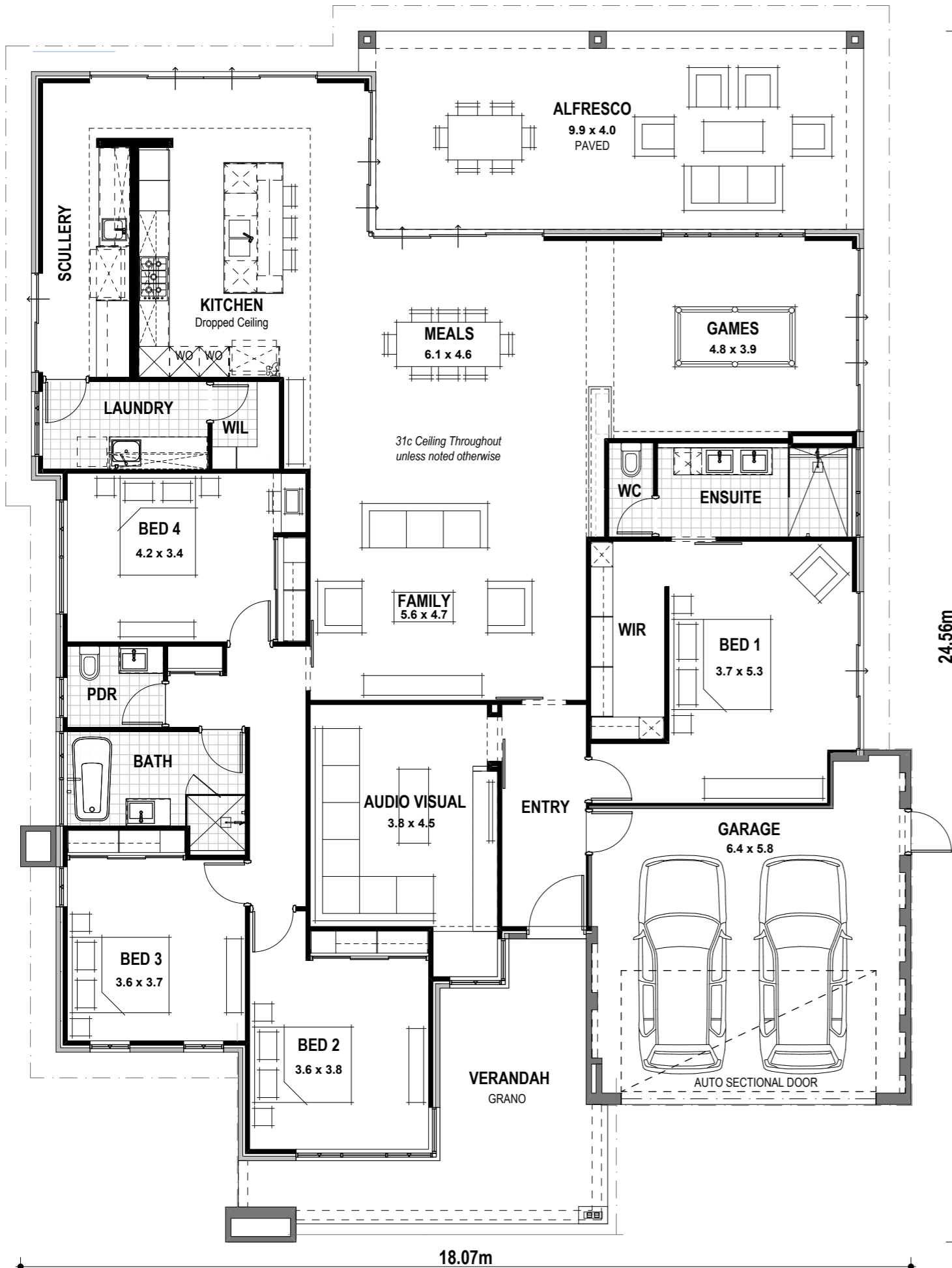
4 2.5 2

## VITAL STATS

Living area 314m<sup>2</sup>  
(including Alfresco)

Total area 377m<sup>2</sup>  
(excluding eaves)

Scale 1:100



# 2024 Telethon Home Inclusions

## STANDARD INCLUSIONS

- 6 Star rated home
- Termite treatment and certificate
- 2 course clay brick double brick construction
- Colorbond® custom orb 25° metal roof
- Colorbond® fascia, downpipes and slotted gutters
- H2 treated roof timbers
- R4.0 ceiling insulation to home including Garage (excluding Verandah and Alfresco)
- Painting to walls, ceilings, cornice, doors, door frames, internal cladding, eaves, posts, woodwork and meterbox
- Feature Front Elevation
- Recycled 1c external face brickwork with rolled brick joints in white mortar to sections of Front Elevation (includes all external and internal walls of Garage), pier to Secondary Street Elevation, Pergola piers, Alfresco piers and section of letterbox
- Composite wall cladding to front elevation gable
- Acrylic render to remainder of house externally and section of letterbox
- Double Garage with concrete hardstand
- Architectural Series auto sectional door with 3 controllers and "Centurion Euro 1250"
- WiFi opener with built-on camera to Garage
- Sealed washed aggregate to Driveway, Crossover, Verandah and steps to front garden
- Sealed Flagstone Geo 60mm thick pavers to Car Bay, Master Suite Courtyard, Games Courtyard, Alfresco, Pergola, Drying Courtyard and pathways to rear and right hand side of home
- 10mm ceiling board plasterboard lining to 31c high ceilings as displayed
- Dropped ceiling to Kitchen
- Dropped bulkhead to Audio Visual, Family, Meals, Scullery, Laundry and Bedroom 4
- 10mm ceiling board plasterboard lining to 31c high ceiling to Garage
- Capri lined ceiling to Verandah
- Capri lined 3c recessed ceiling to Alfresco
- Esperance cornice throughout internally and to Garage
- 10mm wet area board lining to Laundry and Walk-in Linen walls
- 10mm Smartwall plasterboard lining to all remaining internal walls (excluding Garage)
- Urbanline powder-coated aluminium sliding doors (clear glass)
- Designerline powder-coated aluminium breeze lock awning and fixed windows (clear glass)
- Fibreglass meshed flyscreens to all aluminium opening windows and sliding doors
- Designerline 28c high x 1200 wide powder-coated aluminium single lite (clear glass) door and frame with Della Vita electronic smart lock handle to Entry
- 28c high aluminium 3 panel stacker sliding doors (clear glass) with dropper column to Meals / Alfresco and Kitchen / Alfresco
- 28c high aluminium 4 panel double sliding doors (clear glass) to Kitchen / Pergola and Games
- 28c high aluminium 3 panel single sliding door (clear glass) to Master Suite
- 28c high aluminium 2 panel standard sliding door (clear glass) to Scullery
- 28c high head to all aluminium windows
- Moda range 2340mm high solidcore door with M&B timber door frame to Garage
- Elements fibreglass Weathercote 2340mm high flush panel door with JDS Mod metal door frame to Side Garage
- Neue Aurora lever lock set and Neue round double cylinder deadbolt to Garage and Side Garage doors
- Moda (MDF) range barn doors 2340mm high with exposed sliding track and 250mm flush pulls to Entry / Audio Visual, Master Suite / Ensuite, Entry / Family and Family / Minor Bedroom Passage
- Moda (MDF) range 2340mm high doors and JDS Mod metal door frames to remainder internally
- Avant range lever door handles to remainder of internal doors
- Mirrorline mirrored sliders to Minor Bedroom robes

- Mirrorline Supa Whitekote sliders to Minor Bedroom Passage Linen
- Built-in shelving system to Master Suite walk-in robe and Minor Bedroom robes
- Walk-in Linen to Laundry with 4 white lined shelves
- Built-in Linen to Minor Bedroom Passage with 4 white lined shelves
- Three TV points, one phone and four internet data points
- Iconic single power points to appliance and Garage sectional door locations
- Iconic double power points to remainder of home
- Iconic Wiser light switches throughout
- Eight external wall lights, five garden lights, festoon lights to Pergola and two batten ceiling lights to Garage
- Two pendant lights to Dining, two wall lights to Master Suite, four surface mounted downlights to Kitchen and one pendant light to Games
- 7W downlights to remainder of home
- KITCHEN**
- 20mm stone benchtops from Builders Luxury specification to Kitchen
- Matt doors, drawer fronts and all exposed edges to Kitchen
- Builders Luxury Kitchen specification handles to Kitchen
- Pull-out double bin
- Double sized Blum® cutlery tray
- Laminated Pantry with four shelves
- Microwave recess with single power point
- Pot drawers
- Overhead cupboards
- 2650mm long x 1200mm wide island bench with waterfall ends
- Soft closing doors and drawers
- 600mm dark stainless steel electric ovens
- 900mm black ceramic glass gas hotplate
- 800mm stainless steel concealed rangehood
- Double bowl undermount stainless steel sink
- 600mm dark stainless steel dishwasher with cold water tap and single power point
- 42L dark grey glass microwave
- 562L quad door matte charcoal black fridge with cold water tap
- SCULLERY**
- 20mm stone benchtops from Builders Luxury specification to Scullery
- Matt doors and all exposed edges to Scullery
- Builders Luxury specification bar style handles to Scullery
- Overhead cupboards
- Soft closing doors
- Single bowl above mount stainless steel sink
- Custom built-in fridge recess with overhead cupboards and three door pantry
- 562L quad door matte charcoal black fridge
- LAUNDRY, ENSUITE, BATHROOM AND MAIN WC**
- 20mm stone benchtops from Builders Luxury specification to Laundry, Ensuite, Bathroom and Powder
- Matt doors and all exposed edges to Laundry
- Gloss doors, drawer fronts and all exposed edges to Ensuite, Bathroom and Powder
- Builders Luxury specification bar style handles to Laundry
- Builders Luxury specification aluminium finger grip handles to Ensuite, Bathroom and Powder
- Soft closing doors and drawers (where applicable)
- Full height feature wall tiling to Ensuite, Bathroom and Powder vanity walls
- Full height wall tiling to remainder of Ensuite, Bathroom, Powder and all walls of Ensuite WC
- Floor tiling to Laundry, Walk-in Linen, Ensuite, Ensuite WC, Bathroom and Powder
- Tiled ledge to Ensuite shower recess and vanity area
- Tiled ledge to Bathroom shower recess
- 10mm frameless clear glazed shower screen to Ensuite

- 10mm frameless clear glazed shower screen and pivot door to Bathroom
- Slimline framed mirrors to Ensuite, Bathroom and Powder
- European inspired 45ltr stainless steel trough to Laundry
- European inspired above counter china basins to Ensuite, Bathroom and Powder
- European inspired shower combo to Ensuite and Bathroom
- European inspired rimless dual flush china toilet suite with 4 star rating and soft close seat to Ensuite WC and Powder
- European inspired double towel rails and toilet roll holders
- Tile insert channel drain floor waster to Ensuite shower
- Tile insert floor wastes to remainder of home
- Hobless showers to Ensuite and Bathroom
- Mitred tiled edges throughout
- European inspired 1700mm freestanding bath to Bathroom
- 8kg front loading washing machine and automatic washing machine taps
- 8kg heat pump dryer
- Flumed exhaust fan to Ensuite, Ensuite WC, Bathroom and Powder
- Two hard wired smoke detectors
- Two safety switches
- Meterbox with lock and viewing panels to both boxes
- Three phase power to meterbox
- Sensor for Verandah and Front Elevation wall lights
- 6 star continuous flow 26L gas hot water system with three controllers
- European inspired mixers throughout
- Three external garden taps
- All downpipes directly connected to onsite stormwater drainage connection point
- ADDITIONAL INCLUSIONS**
- Fully reticulated and landscaped and furnished home
- Vasari 6mm porcelain splash back to Kitchen
- Vasari 6mm porcelain splash back to Scullery
- Vasari 6mm porcelain splash back to Laundry
- Vasari 6mm porcelain splash back to Family / Meals
- Zenith Surfaces zero silica benchtop to Family / Meals / Games
- Zenith Surfaces zero silica desk to Bedroom 4
- Custom built-in cabinet to Games
- Custom built-in cabinet to Audio Visual
- Cladding to sections of Meals, Kitchen, Master Suite, Master Suite Walk-in Robe, Bedroom 4 and Games
- 600x600 floor tiling to Entry, Family, Meals, Games, Kitchen, Scullery, Minor Bedroom Passage and Minor Bedroom Passage Linen
- Carpet on luxury plus underlay to Audio Visual, Master Suite, Master Suite Walk-in Robe, Bedroom 2, Bedroom 3, Bedroom 4 and all minor Bedroom Robes
- Block out and sheer curtains to Master suite
- Block out roller blinds and sheer curtains to Bedroom 2, Bedroom 3 and Bedroom 4
- Sunscreen roller blinds to Scullery and Laundry
- 50mm Decorwood blinds to Audio Visual, Bathroom and Powder
- Sheer curtains to Meals, Games, Kitchen
- Ground mount clothesline
- Powdercoated aluminium slatted double gates to Carbay
- Powdercoated aluminium slatted gate and fixed panel between left hand side of house and boundary
- Four camera CCTV system and alarm system
- 18kW Daikin (7 zones, 9 outlets) reverse cycle air-conditioning system with an AirTouch 5 controller
- Samsung 75 inch QLED TV to Audio Visual
- Ceiling fans to Master Suite, Bedroom 2, Bedroom 3, Bedroom 4 and Alfresco